



Part #: 402446

USN #: 334021016

1/3 HP

SUBMERSIBLE UTILITY PUMP



Exclusively Distributed By:
HD Supply
3400 Cumberland Blvd. SE
Atlanta, GA 30339

HD Supply is here to help.
Online Chat: hdsupplysolutions.com
Email: customer care@hdsupply.com
Call: 1-800-431-3000

© 2025
Made in China

SAFETY INSTRUCTIONS

Please read and understand this entire manual before attempting to assemble, operate or install the product. If you have any questions regarding the product, please call customer service at 1-800-431-3000. Failure to comply with instructions and designed operation of this system may void warranty. **ATTEMPTING TO USE A DAMAGED PUMP** can result in personal injury or death!

1. Do not lift pump by power cord.
2. Do not touch an operating motor housing. The motor is designed to operate at high temperatures.
3. Do not pump flammable or explosive liquids such as oil, gasoline, kerosene, ethanol, etc. Do not use in the presence of flammable or explosive vapors. Using this pump with or near flammable liquids can cause an explosion or fire, resulting in property damage, serious personal injury and/or death.
4. Do not disassemble the motor housing. The motor has NO repairable internal parts, and disassembling it may cause oil leakage into motor housing or dangerous electrical wiring issues.
5. This pump is made of high-strength, corrosion-resistant materials. It will provide trouble-free service for a long time when properly installed, maintained, and used. However, inadequate electrical power to the pump, dirt, or debris may cause the pump to fail. Please carefully read the manual and follow the instructions regarding common pump problems and remedies.

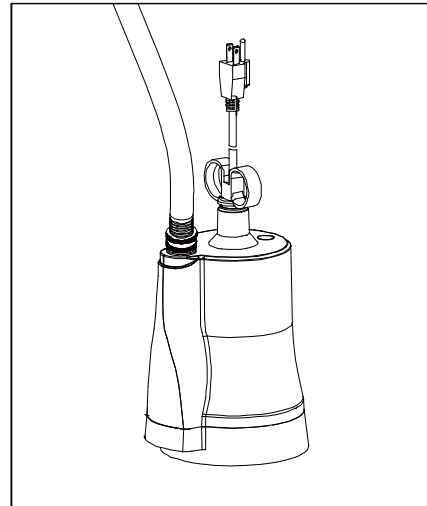
Additional Safety Precautions

1. Know the pump applications, limitations, and potential hazards.
2. Make certain the electrical power source is adequate for the requirements of the pump.
3. ALWAYS disconnect the power to the pump before servicing.
4. Release all pressure within system before servicing any component.
5. Drain all water from system before servicing.
6. Secure discharge line before starting pump. An unsecured discharge line will whip, possibly causing personal injury and/or property damage.
7. Secure the pump on a solid base to keep the pump vertical and above mud and sand during operation to maximize pumping efficiency and prevent clogging and premature pump failure.
8. Check that all pipe connections are tight to minimize leaks.
9. Connect the pump DIRECTLY to a grounded, GFCI outlet.
10. Extension cords may not deliver sufficient voltage to the pump motor. Extension cords present a life threatening safety hazard if the insulation becomes damaged or the connection ends fall into water.
11. Make certain the electrical circuit to the pump is protected by a 10 Amp or larger fuse or circuit breaker.
12. Periodically inspect the pump and system components to be sure the pump inlets are free of mud, sand, and debris. DISCONNECT THE PUMP FROM THE POWER SUPPLY BEFORE INSPECTING.
13. Do not handle pump or pump motor with wet hands or when standing on wet or damp surface, or in water.
14. Wear safety goggles at all times when working with pumps.
15. Follow your local electrical and safety codes.

16. This unit is designed only for use on 115 volts (single phase), 60 Hz, and is equipped with an approved 3-conductor cord and 3-prong grounded plug. **DO NOT REMOVE THE GROUND PIN UNDER ANY CIRCUMSTANCES.** The 3-prong plug must be directly inserted into a properly installed and grounded 3-prong, grounding-type receptacle. Do not use this pump with a 2-prong wall outlet. Replace the 2-prong outlet with a properly grounded 3-prong receptacle (a GFCI outlet) installed in accordance with your local codes and ordinances. All wiring should be performed by a qualified electrician.
17. Protect the electrical cord from sharp objects, hot surfaces, oil, and chemicals. Avoid kinking the cord. Do not use damaged or worn cords.
18. Failure to comply with instruction and designed operation of this unit, may void warranty. **ATTEMPTING TO USE A DAMAGED PUMP** can result property damage, serious personal injury and/or death.
19. For safety, the pump motor has an automatically resetting thermal protector that automatically will turn off the pump if it becomes too hot. Once the thermal protector detects that the pump has cooled to a safe temperature, it will allow the pump to operate normally. If the pump is plugged in, it may restart unexpectedly.
20. Before using the pump, check hose for holes or excess wear, which could cause leaks, and be sure hose is not kinked or making sharp angles. A straight hose allows the pump to move the greatest amount of water quickly, and also check that all hose connections are tight to minimize leaks.
21. Always make sure the pump is unplugged as soon as the water level reaches 1/4 in. At water levels less than 1/4 in., the pump is attempting to pump air, which will cause the pump to overheat and wear out. Running the pump without sufficient water will damage the pump and void the pump's warranty

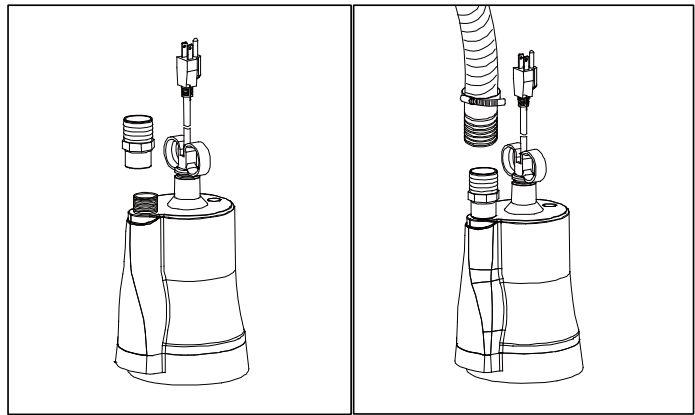
DESCRIPTION

1. Attach a 5/8 in. inside diameter or larger garden hose (not included) to the pump outlet.
Note: Be sure the hose end has a rubber washer to minimize water leaks.



2. If you would prefer to use a larger hose in order to pump water away more quickly, attach the included adaptor to pump, and then securely attach the Hose Kit to the adaptor.

WARNING: Secure the discharge hose before plugging in the pump. Pump torque may cause an unsecured discharge hose to “whip”, possibly causing personal injury and/or property damage.



OPERATION

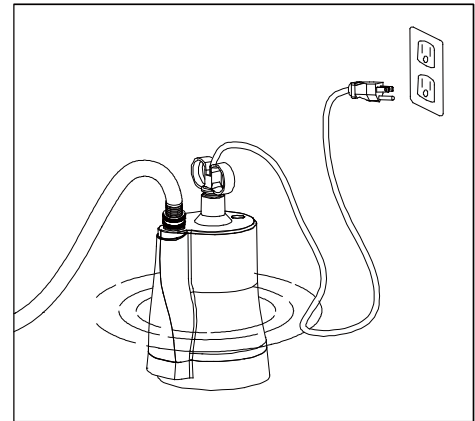
NOTICE: Make certain you unwind the garden hose completely. Kinks in the hose will restrict the pump, preventing it from priming, which is the first step to pumping water. The water level must be at 1 in. for the pump to prime and operate.

Plug the pump into a 115 volt GFCI power outlet.

WARNING: Do not let plug fall in water and do not stand in water while the pump is plugged in. The pump will start operating when the power cord is plugged into the outlet. Once the pump has removed the water down to 1/4 in., unplug the pump.

CAUTION: Failure to unplug it will result in the pump going into thermal overload.

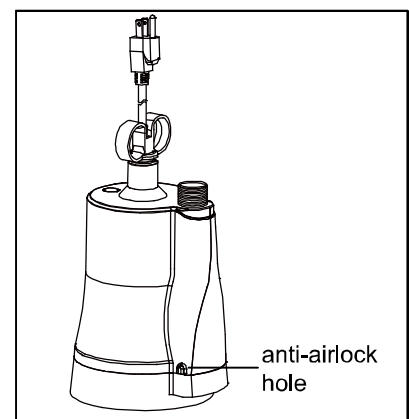
CAUTION: Do not run the pump dry. Operating the pump without water will cause damage to seals and will cause the pump to fail, thereby voiding the pump's warranty. Remove the pump and hose from the location when finished pumping, as the hose still has water that can drain back through the pump. Remove remaining water with squeegee, mop, sponge, towel, wet/dry vac, etc.



AIRLOCK

This pump is a centrifugal utility pump, designed to efficiently remove water. However, it cannot move air. If air is trapped inside the pump (a condition called “airlock”), the pump cannot pump water out even though the pump is completely submerged. This pump has an anti-airlock hole. Air flows out through the anti-airlock hole, eliminating the air so that the pump can operate properly. If debris blocks the anti-airlock hole unplug the pump, clean out the anti-airlock hole, and restart the pump. Alternately, drain the water out of the garden hose, keep the end of the hose out of the water, and plug in the power cord, restarting the pump.

This hole is for anti-airlock purpose, leakage of air or water is NORMAL and NECESSARY. DO NOT BLOCK THIS HOLE!



CAPACITY

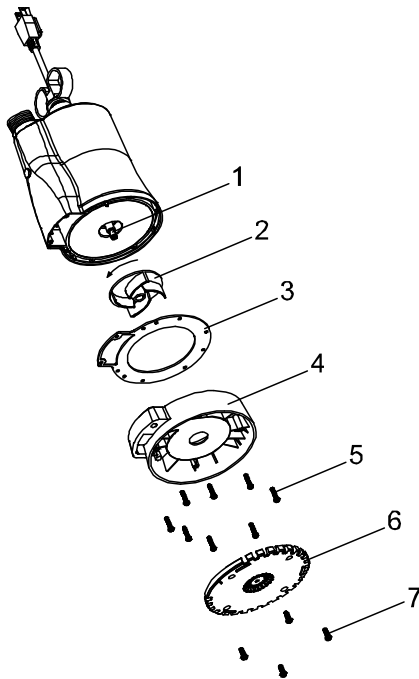
Part #	HP	GPH of Water @ Total Feet (Meters) of Lift						Maximum Lift
		0 ft.	5 ft.	10 ft.	15 ft.	20ft.	25ft.	31ft.
402446	1/2	1800	1650	1500	1320	1080	800	0

SPECIFICATION

- Power supply required: 115V AC, 60 HZ
- Water temperature range: max.77°F (25°C)
- Individual branch circuit required: 10Amp minimum
- Operating water depth: minimum, 1 in.
- Ending water level: maximum, 1/4 in.
- Discharge connection: 3/4 in. garden hose thread or 1-1/4 in. hose with included adaptor
- Discharge hose diameter: 5/8 in. minimum I.D.
- Discharge hose length : 50 ft. maximum recommended hose length
- Motor: permanent split capacitor, with thermal overload protection

TROUBLESHOOTING GUIDE CHECKLIST

Do not disassemble the motor housing. This motor has NO repairable internal parts, and disassembly may cause an oil leak or dangerous electrical wiring issues. DO NOT lift up the pump by power cord



Item number	Description
1	Shaft
2	Impeller
3	Gasket
4	Volute
5	Screw
6	Bottom plate
7	Screw

Problem	Possible Cause	Corrective Action
Pump does not start or run	<ol style="list-style-type: none"> 1. Blown fuse 2. Tripped breaker 3. Plug disconnected 4. Thermal overload 5. Corroded plug 6. Motor failed 	<ol style="list-style-type: none"> 1. Replace fuse 2. Reset breaker 3. Secure plug 4. Unplug the pump for 30 minutes, then plug in 5. Clean plug prongs 6. Replace the pump
Pump cannot pump water out	<ol style="list-style-type: none"> 1. Screen blocked 2. Hose kinked, bent sharply, or coiled 3. Airlock 4. Impeller loose on shaft 5. Impeller broken 	<ol style="list-style-type: none"> 1. Clean screen 2. Straighten hose 3. Clean anti- airlock hole 4. Reassemble impeller 5. Replace impeller

WARNING:

This product can expose you to chemicals including Lead and Di(2-ethylhexyl)phthalate (DEHP), which are known to the State of California to cause cancer and birth defects or other reproductive harm. For more information go to www.P65Warnings.ca.gov

Exclusively Distributed By:
 HD Supply
 3400 Cumberland Blvd. SE
 Atlanta, GA 30339

HD Supply is here to help.
 Online Chat: hdsuppliesolutions.com
 Email: customercare@hdsupply.com
 Call: 1-800-431-3000

© 2025
 Made in China